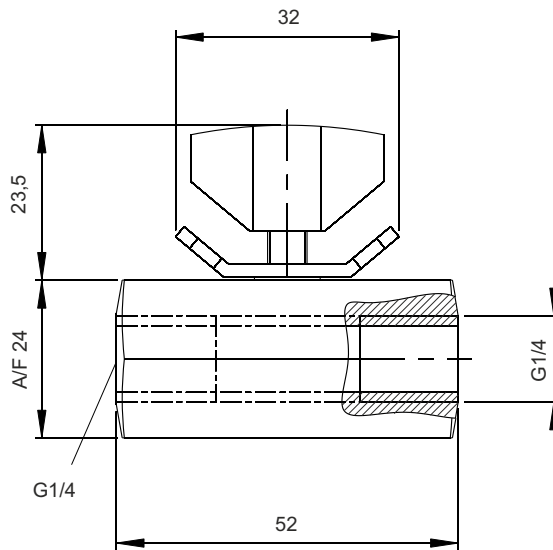


# THROTTLE CHECK VALVES

single valve for threaded pipe connection, pmax. 500 bar



Webcode: 070015

Other designs are available on request

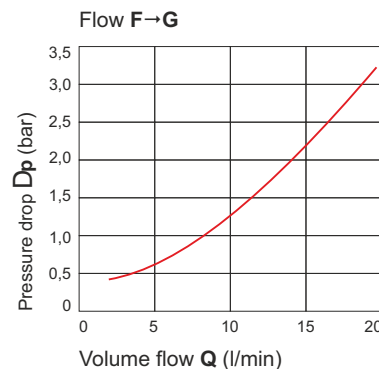
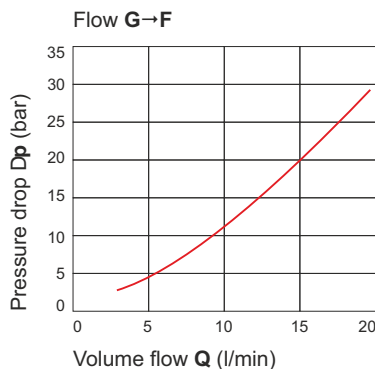


## Technical data:

<b>Type</b>	<b>Throttle check valve</b>	
Variation	Single valve for threaded pipe connection	
Adjustability	Can be adjusted manually	
Max. operating pressure (p <sub>max.</sub> )	[bar]	500
Max. volume flow <sup>(1)</sup> (Q <sub>max.</sub> )	[l/min]	15
Weight approx.	[kg]	0,18
<b>Order no.</b>	<b>DRV-500-5-001</b>	

<sup>(1)</sup>Value applies to a fully opened valve and a resistance to flow of approx. 50 bar in throttled direction.

D<sub>p</sub>-Q nominal lines (guide values) for kinematic oil viscosity during the measurements 36 x 10<sup>-6</sup> m<sup>2</sup>/s., throttle fully opened;



## Description:

The throttle check valve belongs to the flow control valves. The throttle check valve is used with single- and double-acting consumers. Herewith, it affects the volume flow.

- Throttled flow from G → F
- Free flow from Flow F → G

## Advantages:

- ☒ Easy adjustable by hand throttle
- ☒ Easy installation by threaded connections
- ☒ Installation without additional fastening materials possible
- ☒ Suitable for single-acting and double-acting consumers

**HYDROKOMP®**  
Hydraulische Komponenten GmbH

Siemensstraße 16, 35325 Mücke (Germany)  
Phone: +49 6401 225999-0  
Fax: +49 6401 225999-50  
E-mail: info@hydrokomp.de  
Internet: www.hydrokomp.de